



## WX5600-T0

### Dual-Band Wireless AX6000 2.5G Extender

The Zyxel WX5600-T0 Dual-Band Wireless AX6000 2.5G Extender enables carrier-grade performance. As a key component of the Zyxel MPro Mesh® Solutions, the WX5600-T0 delivers smooth data streaming and seamless roaming for whole-home Wi-Fi coverage.

### Benefits

#### Wi-Fi 6 technology for superior lag-free performance

Supporting the latest Wi-Fi 6 (11ax) standard, the WX5600-T0 delivers speeds up to 4800 Mbps\* with 5 GHz 4x4 802.11ax and 1200 Mbps\* with 2.4 GHz 4x4 802.11ax. The uplink MU-MIMO, Orthogonal Frequency Division Multiple Access (OFDMA) and beamforming technologies empower WX5600-T0 to deliver premium speed for multi-streaming data access and optimal Wi-Fi experiences without dead zones.

#### Premium MPro Mesh® for whole-home Wi-Fi coverage

Featuring EasyMesh fully compliant Zyxel MPro Mesh® Solutions\*\*, the WX5600-T0 enhances your subscribers' experience by providing self-adapting, easy-to-manage whole-home Wi-Fi coverage while reducing your service OPEX.

#### Seamless whole-home fiber-grade service

With two 2.5GbE LAN ports, the WX5600-T0 works seamlessly with any 2.5GbE Wi-Fi 6 gateways to extend the reach of a premium Wi-Fi network anywhere in your customers' homes, satisfying their demands for bandwidth-intensive applications.

Datasheet [WX5600-T0](#)



Wi-Fi 6 (11ax) 4x4+4x4 for superior performance and coverage



Zyxel MPro Mesh® Solutions (compliant with EasyMesh standards)



2.5GbE LAN ports for optimized bandwidth utilization



Remote management via TR-369/TR-069/TR-181



Zyxel-developed OPAL for superior flexibility and faster time to market



## TR-369/TR-069 remote management for lower OPEX

Compliant with TR-369/TR-069 standards, the WX5600-T0 significantly simplifies deployment complexity and lowers operating and maintenance costs. The additional support to the latest TR-181 issue-2 data model also enhances service providers' visibility on subscriber LAN networks to offer improved customer assistance.

## Zyxel OPAL firmware achieves superior flexibility and shortens time to market

Compliant with the same OPAL firmware trunk applied to all Zyxel CPEs, the WX5600-T0 inherits a rich, field-proven feature set for guaranteed same user experience after migrating to new devices.

## Specifications

### System specifications

#### Wireless standards

- IEEE 802.11 a/n/ac/ax 5 GHz
- IEEE 802.11 b/g/n/ax 2.4 GHz

#### Wireless speed

- Transmit/receive
  - 4800 Mbps\* for 5 GHz
  - 1200 Mbps\* for 2.4 GHz

#### Wireless security

- WPA2-PSK/WPA3-SAE

#### Wireless features

- Auto channel selection
- MU-MIMO and beamforming
- Video-grade QoS
- Wi-Fi Protected Setup (WPS)
- Wi-Fi Multimedia (WMM)
- MAC address filtering
- Multiple SSIDs up to 4
- AP/band steering

#### System management

- Web GUI (HTTP/HTTPS)
- BBF TR-069/TR-369 via TR-098/TR-181 i2 data model
- Firmware upgrade via web GUI/TR-369/TR-069 protocol
- Dual images system recovery
- DHCP client and IGMP snooping
- MPro Mesh® management

#### Operation mode

- AP/repeater

#### MPro Mesh® management

- Auto-configuration
- Band steering
- Multi-AP roaming
- Backhaul priority

### Hardware specifications

#### LAN

- Two 2.5GbE RJ-45 ports with auto MDI/MDIX support

#### Wireless

- 5 GHz: four internal antennas
- 2.4 GHz: four internal antennas

#### Buttons

- Power on/off
- Reset
- WPS

#### LED indicators

- Power/system status
- Backhaul link quality
- Wi-Fi
- WPS

### Power consumption

- 12 V DC 1.5 A
- 18 Watt max

### Physical specifications

- Item dimensions (LxWxH):  
128 x 40 x 128 mm  
(5.03" x 1.57" x 5.03")
- Item weight: 307.8 g (0.67 lb.)
- Packing dimensions (LxWxH):  
261 x 136.5 x 44 mm  
(10.27" x 5.35" x 1.73")
- Packing weight: 619.8 g (1.37 lb.)

### Environmental specifications

#### Operating environment

- Temperature:  
0°C to 40°C (32°F to 104°F)
- Humidity:  
10% to 90% (Non-condensing)

#### Storage environment

- Temperature:  
-30°C to 70°C (-22°F to 158°F)
- Humidity:  
10% to 95% (Non-condensing)

### Certification

- CE
- Safety
- ErP

### Package contents

- Wireless extender
- Power adapter
- Ethernet cable
- Quick Start Guide

\* The maximum wireless data is derived from IEEE standard 802.11 specifications. Actual data transfer rate will vary from network environment including: distance, network traffic, building site materials/construction, interference from other wireless devices, and other adverse conditions.

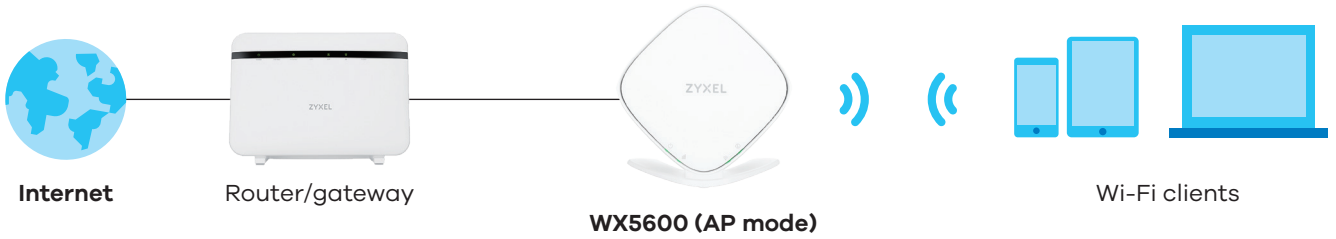
\*\* Combining WX5600-T0 with the same Wireless Extender is advised for the ideal mesh network performance. Please contact us for detailed mesh function availability.

## Application diagram

### Scenario 1

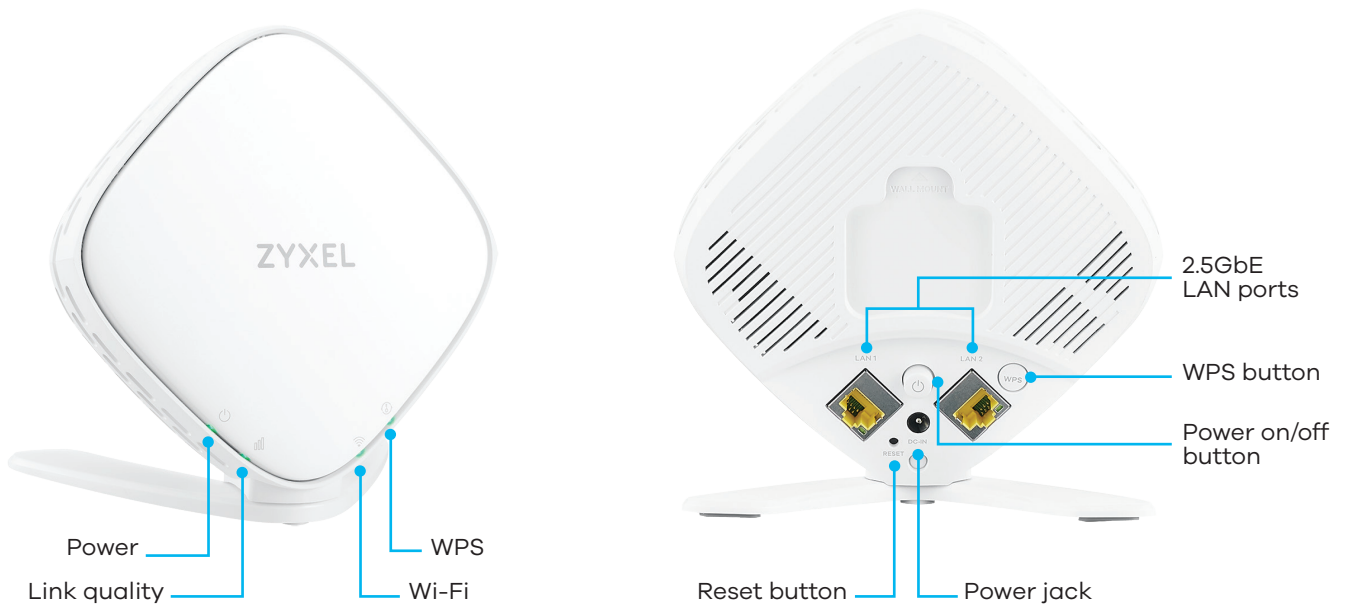


### Scenario 2



— Ethernet    Wi-Fi 2.4 GHz/5 GHz

## Hardware interface





For more product information, visit us on the web at <https://www.zyxel.com/service-provider>



Copyright © 2024 Zyxel and/or its affiliates. All rights reserved.  
All specifications are subject to change without notice.

Datasheet [WX5600-T0](#)



04/10/24